

CMZ

Company profile

soga  energyteam

SYSTEMS & SOLUTIONS FOR MOTION CONTROL


MADE IN ITALY

2026



CANopen

EtherCAT

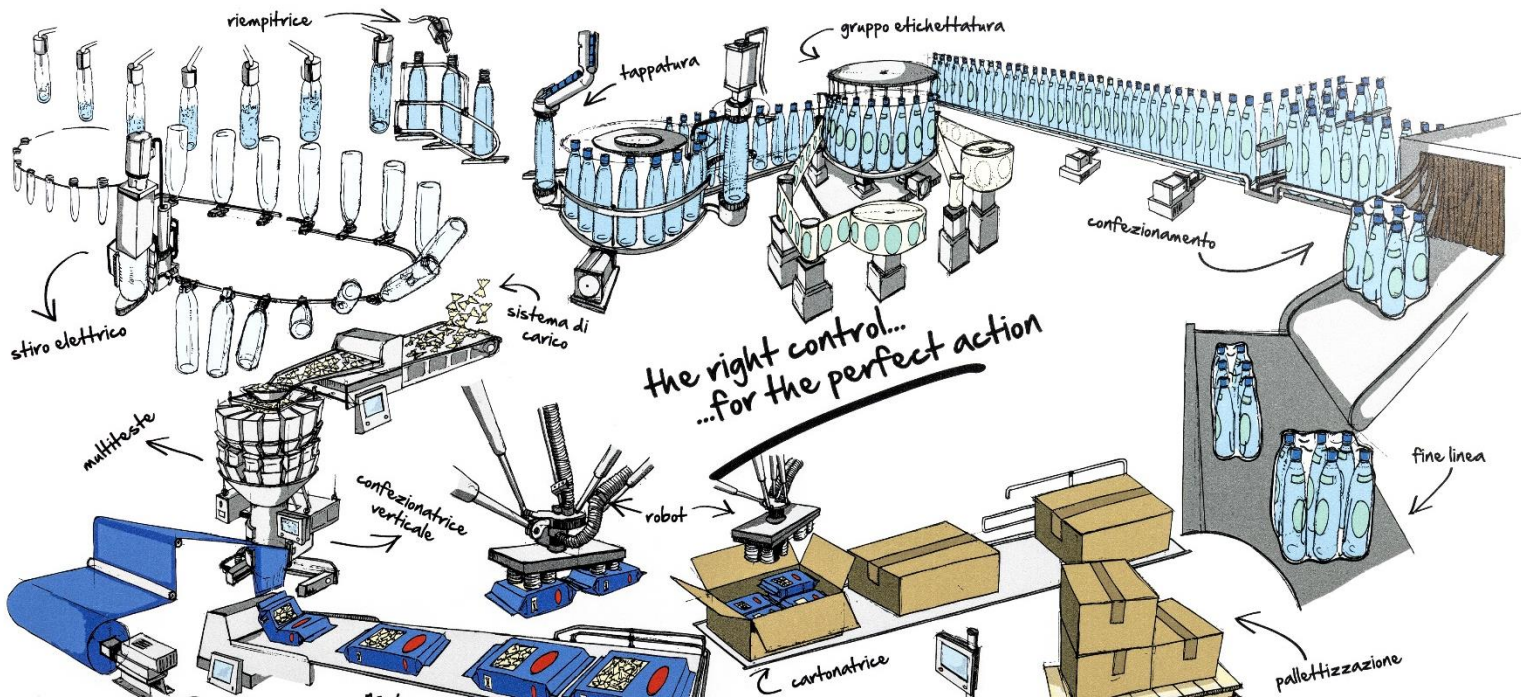
PROFINET

Linux 

EtherNet/IP

Modbus

OPC UA





ANNIVERSARY

CMZ

50

years

1976-2026

CMZ

soga  energyteam

PRESENTATION INDEX

2026

COMPANY

APPLICATIONS

PRODUCTS

WHERE WE ARE

CMZ engineers and produces in Italy electronic systems for industrial automation.



HARDWARE

- IEC61131 controllers
- Drives and Motors
- Planetary gearboxes
- Peripherals & I/Os
- HMIs

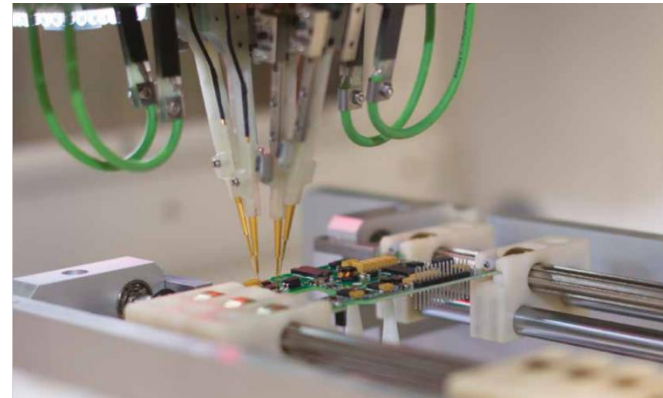
SOFTWARE

- Communication, motion and utility libraries
- Configurable dedicated applicatives

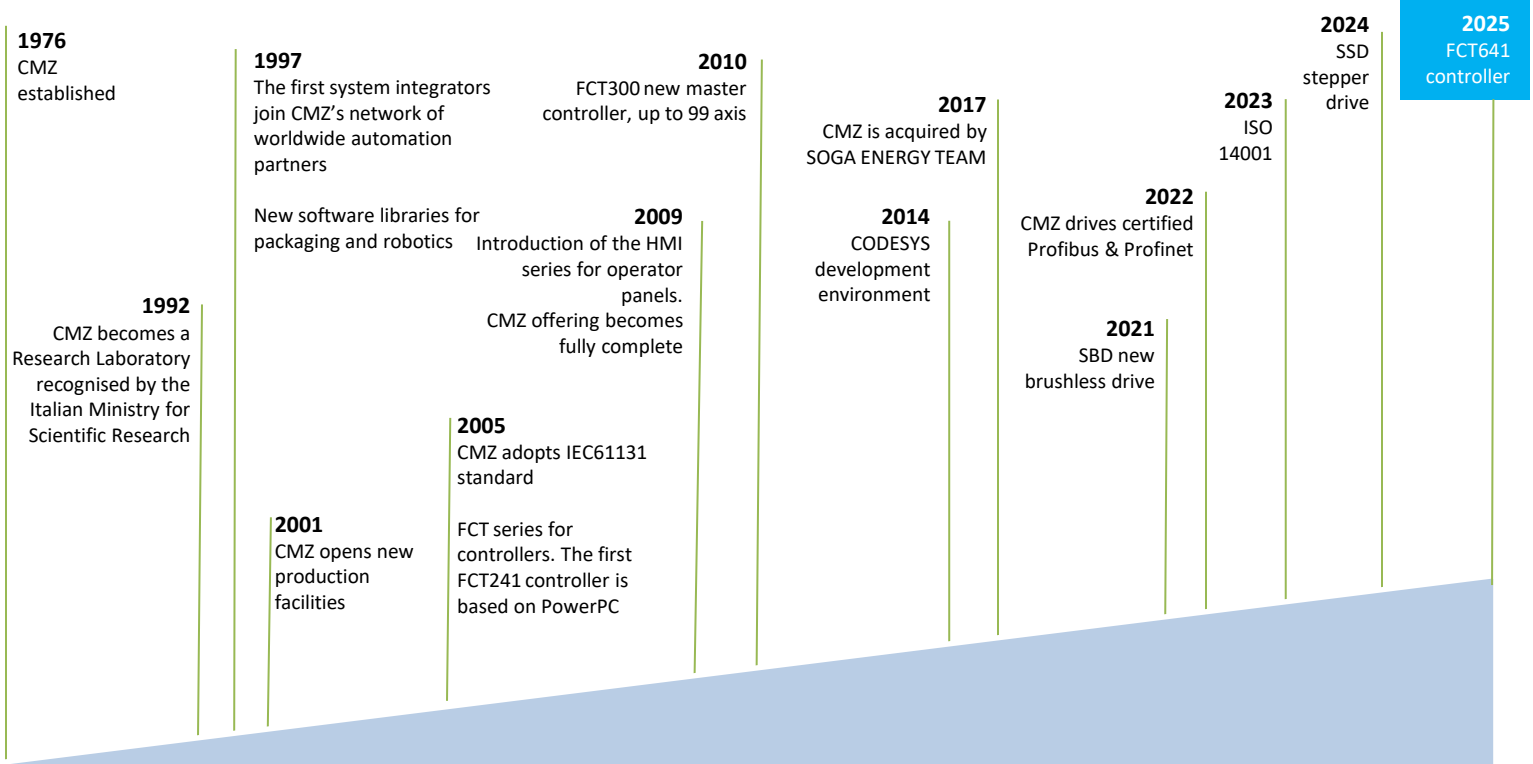
SERVICE

- Engineering & Co-Design
- Remote technical assistance
- Maintenance programs
- Revamping

CMZ MISSION is to be a recognized reliable Partner for **Original Equipment Manufacturers** and **system integrators** for the co-development of automatic machines and equipment with **customized** and specific configuration in **multi axis motion**.

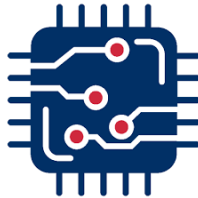


KEY MILESTONES



Investment in R&D
(OpEx & CAPEX;
% of Revenue)

18,3%



Headcount

58



of R&D SW and HW
engineers

20

ISO 9001:2015

ISO 14001:2015



ESG Rating.
CMZ is in category B





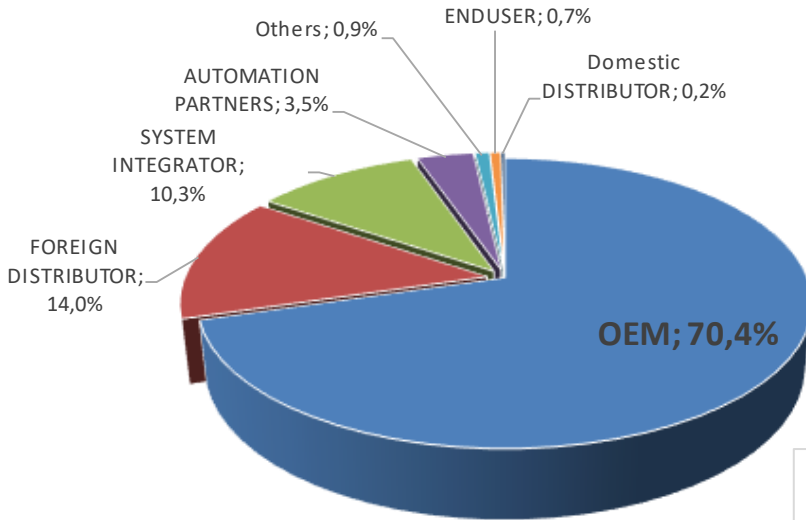
SOGA S.p.A

Group headquarter

COMPANIES	BRANDS	
Soga S.p.A	soga [®]	AC electric motors
	sincro [®]	AC and DC alternators and welders
	watt	PTO tractor-driven generators
	sogaenergies	AC generators for renewables and special projects
Sincro d.o.o		Industrial alternators
CMZ Sistemi Elettronici S.r.l		Electronic systems for industrial automation
Veneta Press S.p.A		Aluminium die-casting
		ENERGY
		AUTOMATION
		FOUNDRY

- 6 brands
- 7 production plants in Italy and Croatia

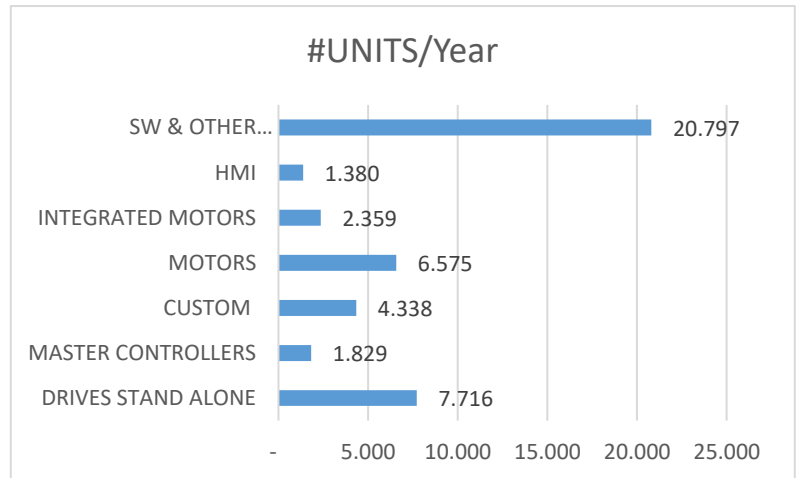
- Export in 90 countries
- ~ 400 employees



With a team of 28 SW and HW engineers CMZ is the ideal partner to support the OEMs

CMZ provides a **full service** platform to a wide installed base:

- 500 Active Clients
- 250.000 Units



COMPANY

APPLICATIONS

PRODUCTS

WHERE WE ARE



KEY APPLICATION MARKETS



Packaging

24,3%



**Dosing &
Weighing**

9%



Beverage

20,2%



Converting

7,2%



**Special
Machines**

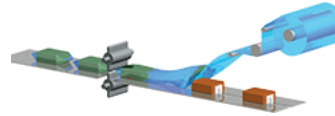
24,9%



Textile

14,4%

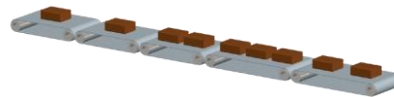
Packaging



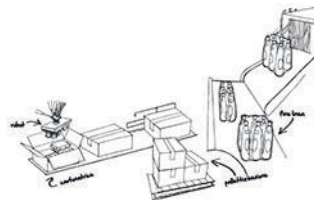
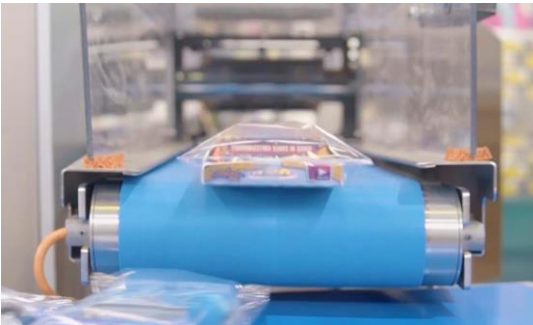
HORIZONTAL PACKAGING MACHINE



VERTICAL PACKAGING MACHINE



LOADING SYSTEMS
SMART BELTS

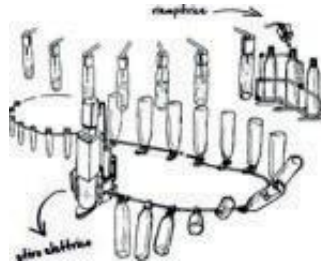


END LINE

Food & Beverage

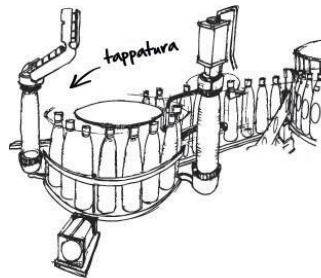


LABELLING MACHINES



FILLING MACHINES

BLOWING MACHINES



CAPPING MACHINES

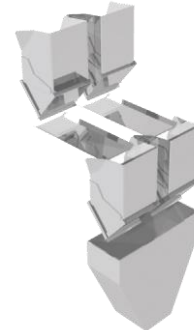
Dosing & Weighing



MULTIHEAD WEIGHERS



LINEAR WEIGHERS



VIBRATING FEEDERS



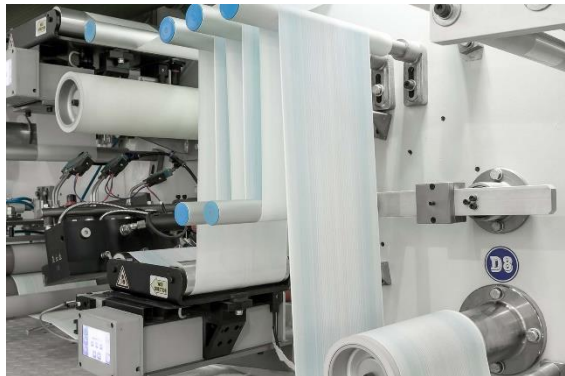
Printing



SYNCHRONIZATION OF PRINTING CYLINDERS

REGISTRATION CONTROL OF PRINTING CYLINDERS

Paper converting



INTERFOLDERS

REWINDERS CUTTINGLINE

FLEXO MACHINES

Textile



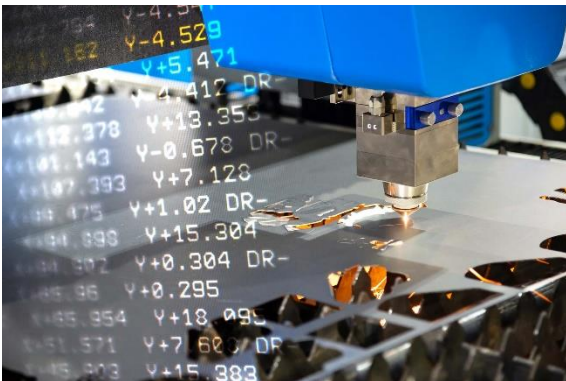
MACHINES FOR FIBERS TREATMENT
(SYNTHETIC AND NATURAL) SUCH AS:
COMBING MACHINES, DRAW FRAME MACHINES

CROCHET AND JACQUARD MACHINES

SEWING/EMBROIDERY MACHINES

SINGLE AND MULTI NEEDLE QUILTING MACHINES

ISO interpreter (G-code)



Glass



THREADING MACHINES

SEALING MACHINES EDGERS

MACHINES COATING REMOVERS

GLASS CUTTING

Metal sheet



FLYING SHEAR

DEFORMATION

CMZ

soga  energyteam

PRESENTATION INDEX

2026

COMPANY

APPLICATIONS

PRODUCTS

WHERE WE ARE

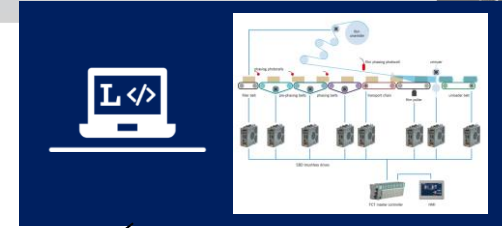


CMZ

soga energyteam

PRODUCTS

2026

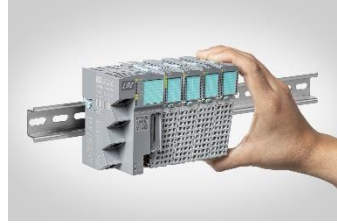


External

CMZ Data Connection

OPC UA

Modbus



Controller

RS 485
RS 232



Interface HMI

Libraries & App



RS 485
RS 232

Modbus

EtherCAT CANopen

PROFINET

EtherNet/IP



IoT WiFi



Drives

Integrated Motors and Drives



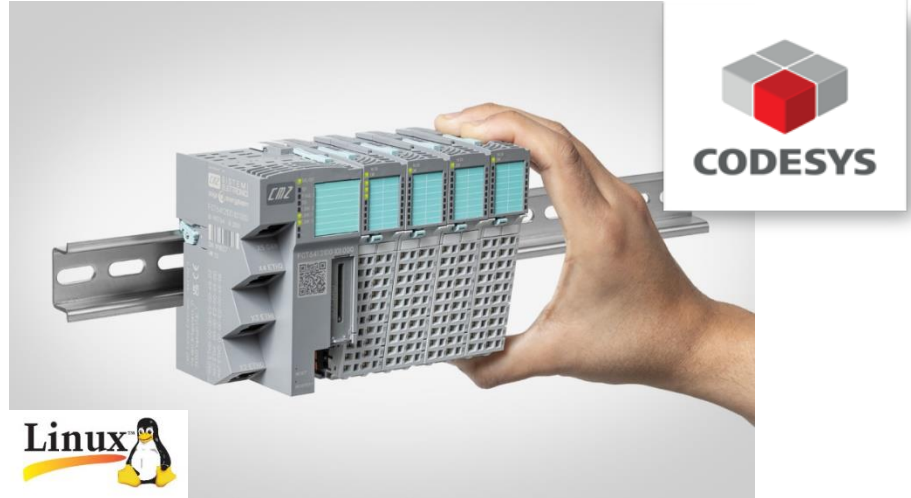
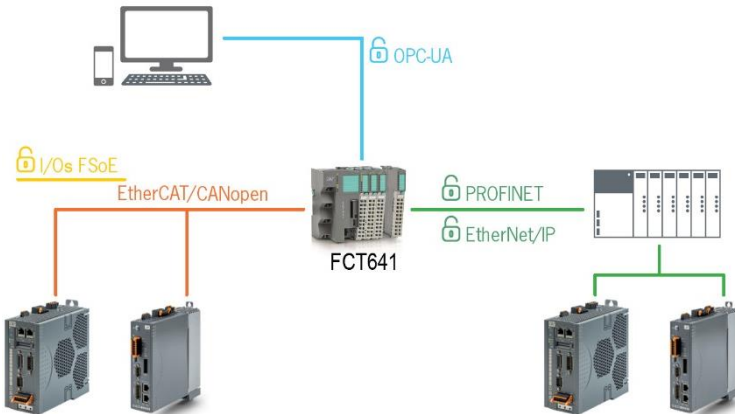
Field

FCT641: Controllers

The new controller FCT641 represents the evolution of FCT640 series, making the most of all the features of CODESYS world, by innovating the control of industrial automation systems at the highest levels of performance.

Based on **LINUX OS**, FCT641 controller is designed for installation of **CODESYS Service Packs** with access to all updates and functions released by CODESYS.

LINUX OS also allows a secure file system and the management of Security certificates.



FCT641 can be supplied with following **Single Licenses** by CODESYS installed directly at order placement:

- OPC-UA
- EtherNet/IP
- PROFINET
- FSoE



SBD: Smart Drives

Brushless drives with CANopen, EtherCAT and Profinet interface

- from 5 to 20 A Nominal
- 230 Vac single phase or 400 Vac 3-phases
- Feedback: Resolver, Incremental encoder, absolute Hiperface Encoder
- Auxiliary encoder input
- Analog and digital IO on board
- STO (under certification)



Wi-Fi
connection
by **cBOX**
Cloud | IoT



EtherCAT  CANopen 

PROFI
NET

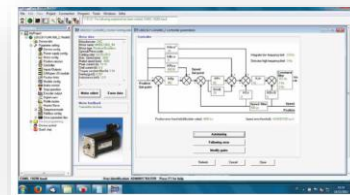
CANopen



RP064: I/O module

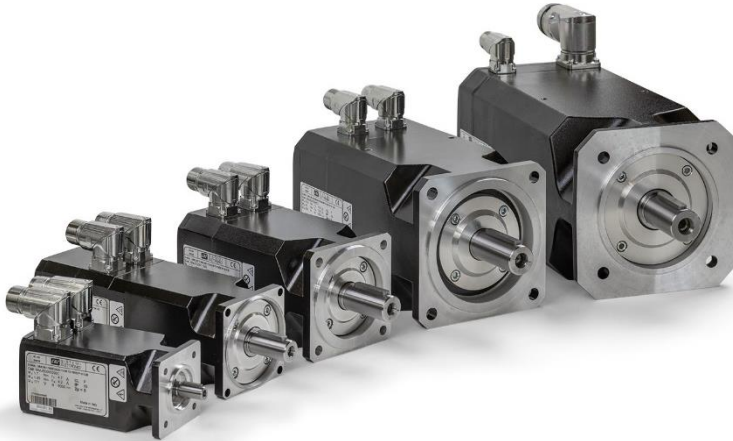
-CANopen Coupler
32 Di + 32 Do + 2 Ai + 2 Ao

CMZ PROPRIETARY
SOFTWARE ENVIRONMENT



MMD/B/S: Servo Motors

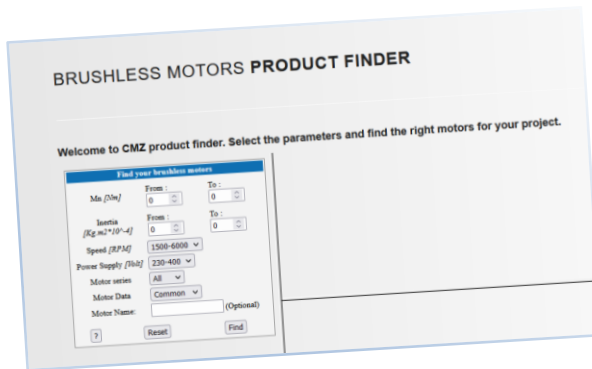
Brushless motors



WEB CONFIGURATOR

TRY IT ON OUR WEBSITE!

www.cmz.it/en/brushless-motors-product-finder/



TORQUE RANGE

- From 0,5 to 120 Nm stall torque

POWER SUPPLY

- 230 Vac and 400 Vac

SPEED

- From 1500 to 6000 rpm

FLANGE

- From 70 to 240 mm

FEEDBACK

- Resolver / Incremental / Absolute – Hyperface / DSL

OPTIONS

- Brake / Flywheel / IP67



PPG: Precision Planetary Gearboxes



TR series



MP series



TR/MP_G series



TR/MP_IS series



TR/MP_MB series



LC series



LCK series



SL series



KR series



TQ series



TQFEK series



TQK series



TQF series



IBD: Integrated Brushless Drives

Power supply: 275 ÷ 730 Vdc (560 Vdc Nominal)

Logic supply: 24 Vdc

Torque range

Stall torque 1,3 - 2,8 – 4 - 5,6 – 6 - 15,4 - 30 Nm

Rated speed:

Vn=5000 rpm (for 1,3 Nm)

Vn=3000 rpm (for 2,8 – 4 - 5,6 – 6 - 15,4 - 30 Nm)

Feedback

HIPERFACE absolute encoder single or multiturn

On board I/O's

for size 1,3 Nm:

3 digital inputs PNP 24 V

2 digital outputs PNP 24 V

1 programmable input/output PNP 24 V

for sizes from 2,8 Nm to 30 Nm:

6 digital IN 24 Vdc general purpose, configurable as:

PSTOP, NSTOP, Enable, Home, Capture, Step/Direction

3 digital OUT 24 Vdc 250mA, general purpose

1 digital IN/OUT 24 Vdc with configurable function

3 differential I/O's configurable as master incremental encoder

1 Analogue IN +/-10 V

Interface:

EtherCAT, CANopen

PROFINET (IBD up to 6 Nm)

Safety:

-For size 1,3 Nm: SIL3 (pending)

-For sizes from 2,8 Nm to 30 Nm:

STO 2 channels (only CAN and ETC) SIL3 (pending)

Protection:

IP65

Option:

Internal brake

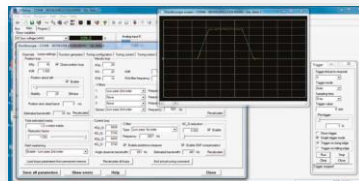
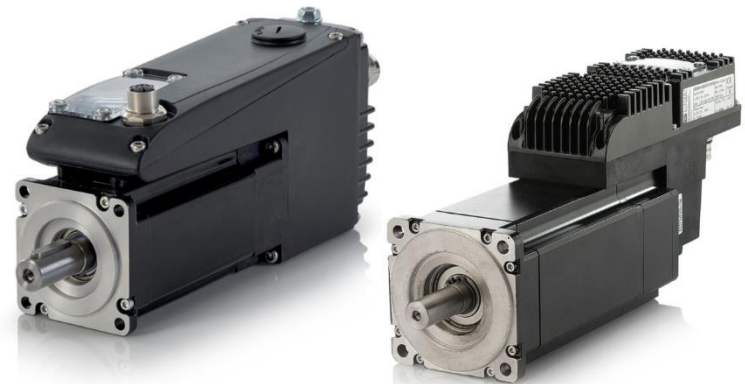


EtherCAT®

CANopen



PROFI®
INDUSTRIAL ETHERNET
NET



SOFTWARE ENVIRONMENT

SD Setup

NBD: Nearby Servo Drives

Drive IP65 for linear and rotating brushless motors

Power supply: 275 ÷ 730Vdc (560Vdc Nominal)

Rated current: 8Arms

Peak motor current: 15Arms

Logic supply: 24Vdc

Protection: IP65

Security: STO 2 channels

Input/Output:

3 digital inputs PNP 24V 2

digital outputs PNP 24V

2 digital input/digital output bidirectional PNP 1

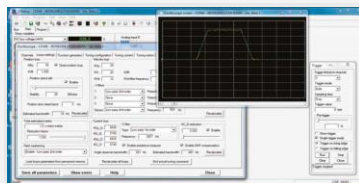
analog input +/- 10V

Encoder master input + 5V out



SOFTWARE ENVIRONMENT

SD Setup



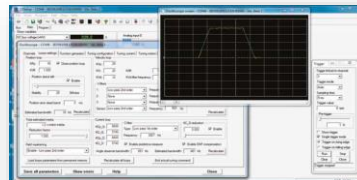
SSD: Stepless Servo Drives

MM: Stepless Motors

Interface: CANopen, PROFINET, EtherCAT, Modbus RTU
 ±10V, RS485 Modbus, pulse/direction
 Profiles of speed, position and torque

Internal PLC programmable in IEC 61131 dedicated
 and general purpose IN/OUT's

Motors sizes available up to 12 Nm
 on 5 sizes



ISD: Integrated Stepless Drives

Up to 12 Nm, DC power supply up to 130 Vdc

Interface: CANOpen, Profibus DP, ±10V,
 RS485 Modbus, pulse/direction

Profiles of speed, position and torque

Internal PLC programmable in IEC 61131
 dedicated and general purpose IN/OUT's



*

SOFTWARE ENVIRONMENT

SD Setup

* through external gateway



TSC: Nearby Servo Drives

Drive for 3 stepper motors

Power supply: 48 Vdc

Protection: IP65

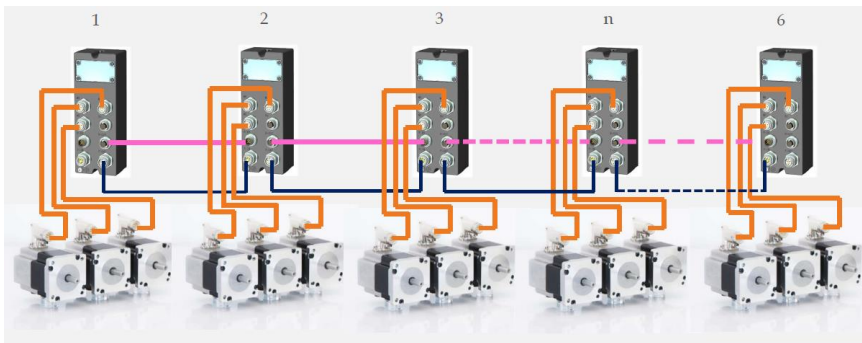
Input: 1 analog input +/- 10V

Daisy chain connection: up to 3 devices

Stepper motors size 60 mm

Torque: 1,65 and 3,1 Nm

Feedback: Absolute single turn encoder



CANopen



HMI

HMI panels

- Premium level panels suitable for Industry 4.0
- Embedded touch system
- Sizes from 4,3" to 15" LCD display
- TFT-LCD
- Max. colors 16-bit
- LED
- CPU: RISC ARM9 32 bit
- Working Memory 64 MB
- USB
- IP66
- 5 years life battery



RS 485
RS 232

EtherNet/IP™

SOFTWARE ENVIRONMENT

Panel Master Designer



1

CMZ is investing for introducing Wi-Fi connection on its main devices



2

What is Wi-Fi useful for?



Cloud Storage



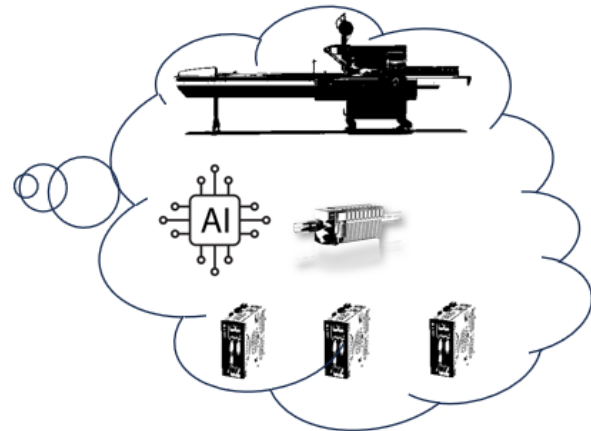
Cloud Service



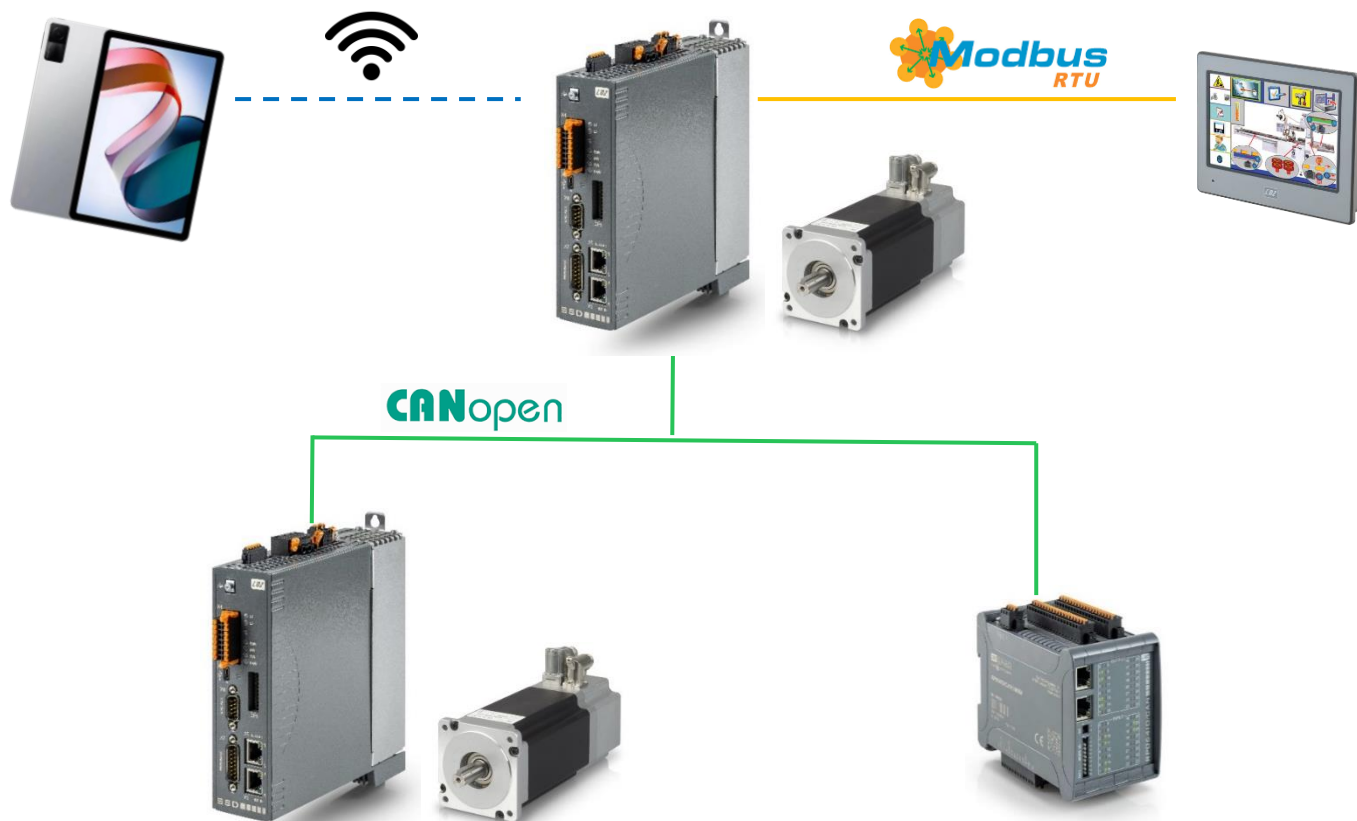
Energy Consumption

3

Complete package HW and SW with integrated IoT functions



CMZ system new architecture. The IoT era has been starting!



CUSTOM PRODUCTS



STEPPER MOTOR CONTROL
CPMSGO



VIBRATING FEEDERS CONTROL
CP6V16



POWER SUPPLY
FOR ISD AND SVM DRIVES
SDPOW1 - SDPOWR



LOAD CELLS ACQUISITION
SGACQA



VIBRATING FEEDERS CONTROL
CP4PWM



POWER SUPPLY
FOR IBD AND NBD DRIVES
BDPOW

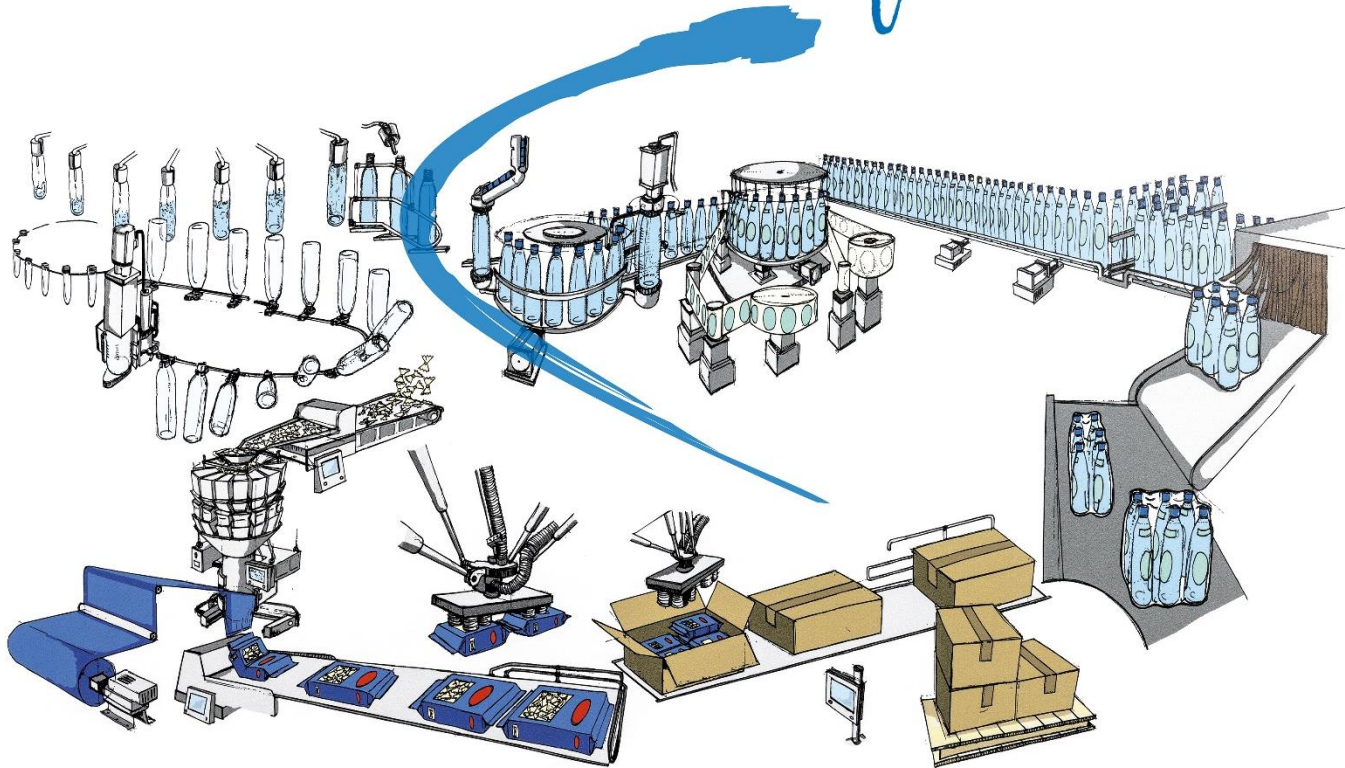


THERMOCOUPLES
CP6TS0

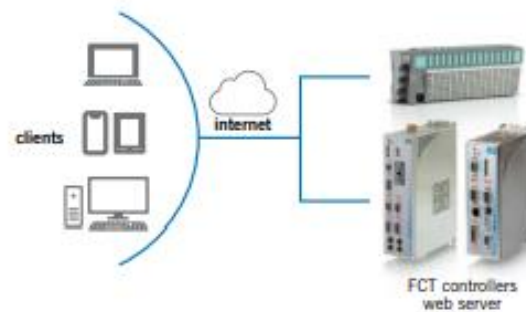
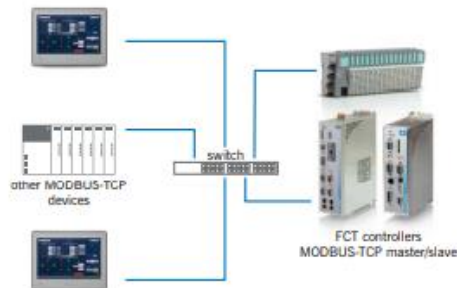
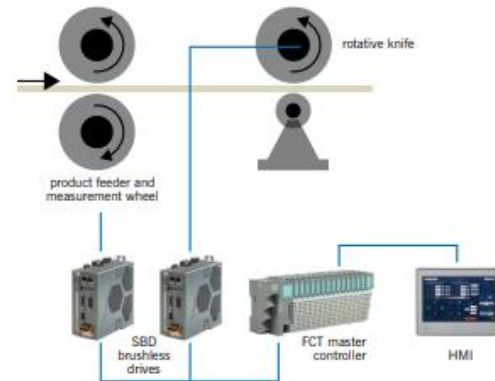
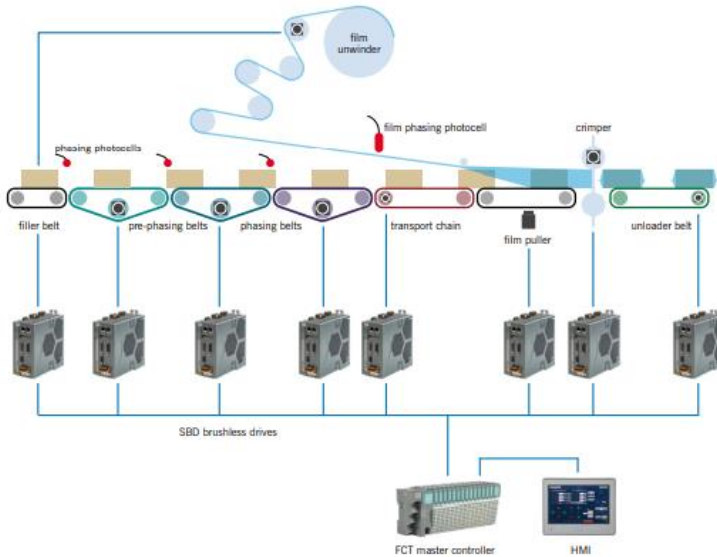


FCT300 & FCT200
I/O LOCAL MODULES

tailor made software



SOFTWARE: Codesys Solutions



CMZ

soga  energyteam

PRESENTATION INDEX

2026

COMPANY

APPLICATIONS

PRODUCTS

WHERE WE ARE



CMZ

soga  energyteam



cmz.it



soga  energyteam

CMZ SISTEMI ELETTRONICI Srl

Via dell'Artigianato, 21 - Vascon di Carbonera 31050 (TV) ITALY

cmz@cmz.it